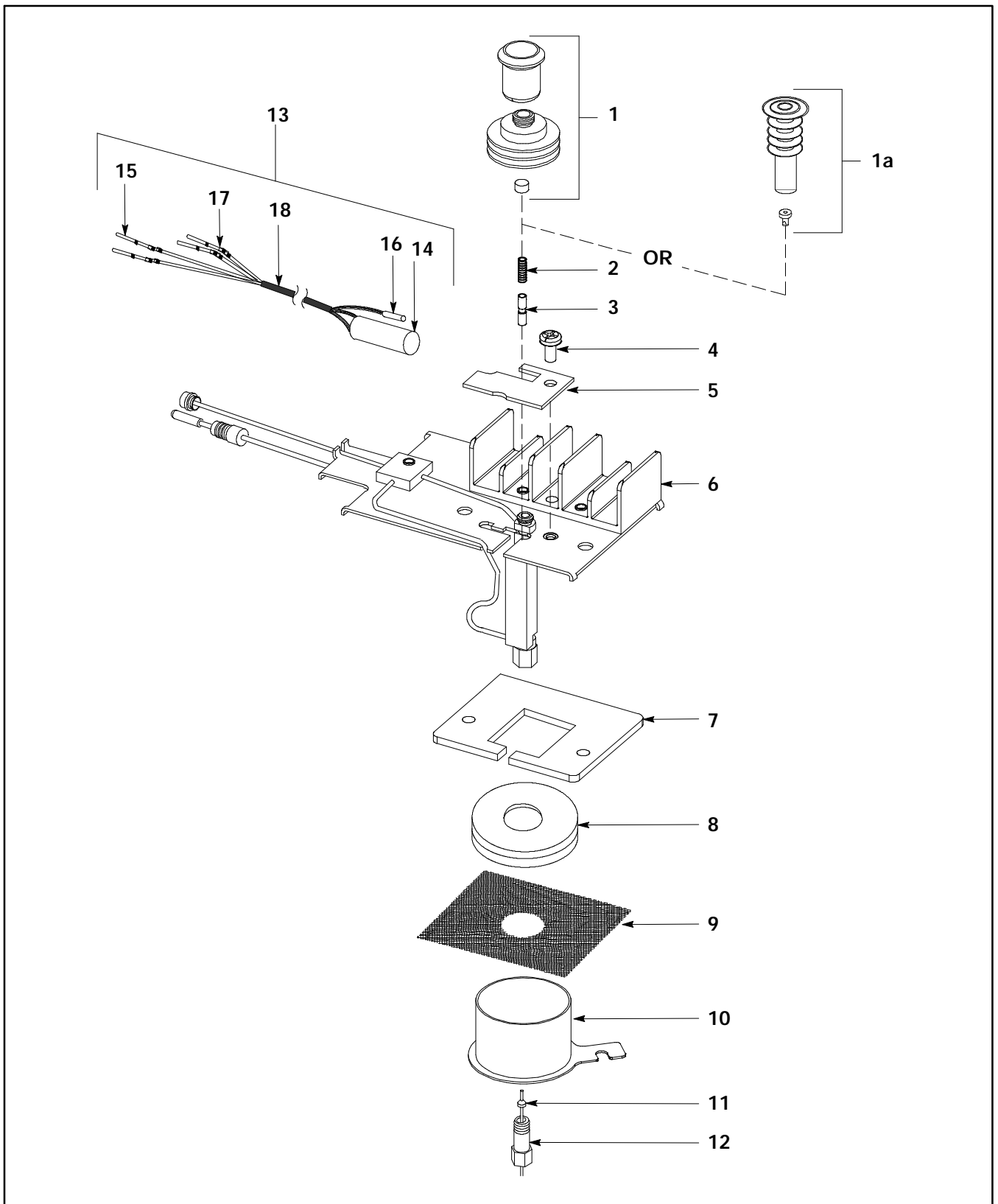


Item	Description	HP Part No.
1	Automatic Injection Assembly	
	· Needle Guide Top	19245-20670
	· Septum Nut Base Assembly	19245-80520
	· Septum (Package of 25)	5181-1260
1a	Manual Injection Assembly	
	· Cooling Tower Assembly/Needle Guide	19320-80625
	· Duckbill (Package of 10)	19245-40050
2	PCOC Insert Spring	19245-60760
3	Inserts:	
	NOTE	
	Inserts are identified by the number of rings around them	
	· Narrow Bore Insert; 200 m (1 ring)	19245-20510
	· Wide Bore Insert; 320 m (2 rings)	19245-20525
	· Megabore Insert; 530 m (0 rings)	19245-20580
	· Capillary Insert for Glass Columns (3 rings)	19245-20550
4	Screw, M4 x 8 mm	0515-0910
5	Heater Clamp	19245-00095
6	On-Column Weldment	19245-80507
7	PCOC Inlet Insulation	19245-20630
8	Lower Insulation	19243-00065
9	Glass Cloth	9300-0713
10	PCOC Cavity Sleeve	19245-00060
11	Ferrules (Package of 10)	
	· Vespel 2% Graphite for 530 m col	5062-3511
	· Vespel 2% Graphite for 320 m col	5062-3513
	· Vespel 2% Graphite for 200 m col	5062-3515
	· Vespel 10% Graphite for 530 m col	5062-3512
	· Vespel 10% Graphite for 320 m col	5062-3514
	· Vespel 10% Graphite for 200 m col	5062-3516
12	Column Nut	18740-20870
13	Heater/Sensor Assembly	19245-60520
14	· Heater, Cartridge, 60 W	19245-60570
15	· Contact	1251-1679
16	· PRT Assembly	19231-60660
17	· Contact	1251-5963
18	· Insulation Sleeving (ordered by the inch)	0890-0737
NOT SHOWN		
	Cleaning Wire Kit	5180-4153
	Screw, M4 x 0.7 x 8	0515-0106

**Figure 5. EPC Programmable Cool On-Column Inlet (Sheet 1 of 2).**



**Figure 5. EPC Programmable Cool On-Column Inlet (Sheet 2 of 2).**